












DIYDrones.com

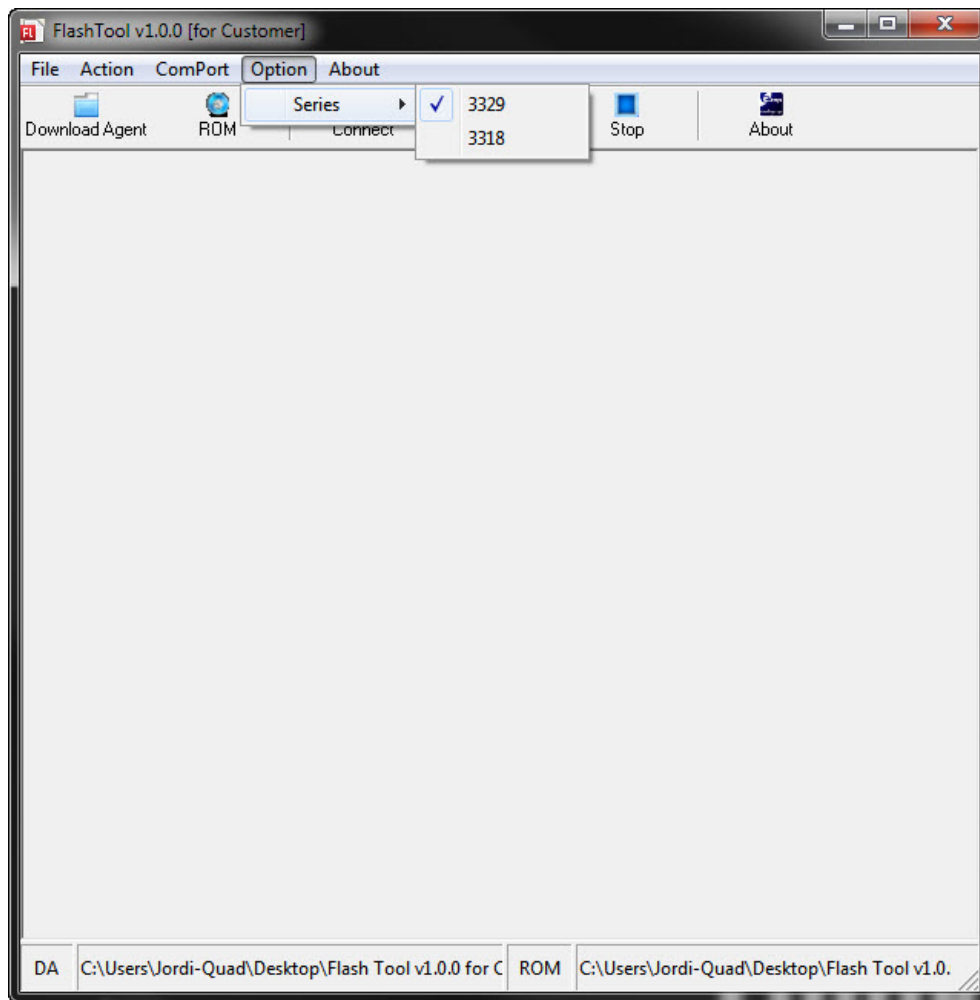
Quick reference to update your MediaTek GPS Module...

1.-Inside the "Flash Tool" folder execute "PowerFlash.exe".

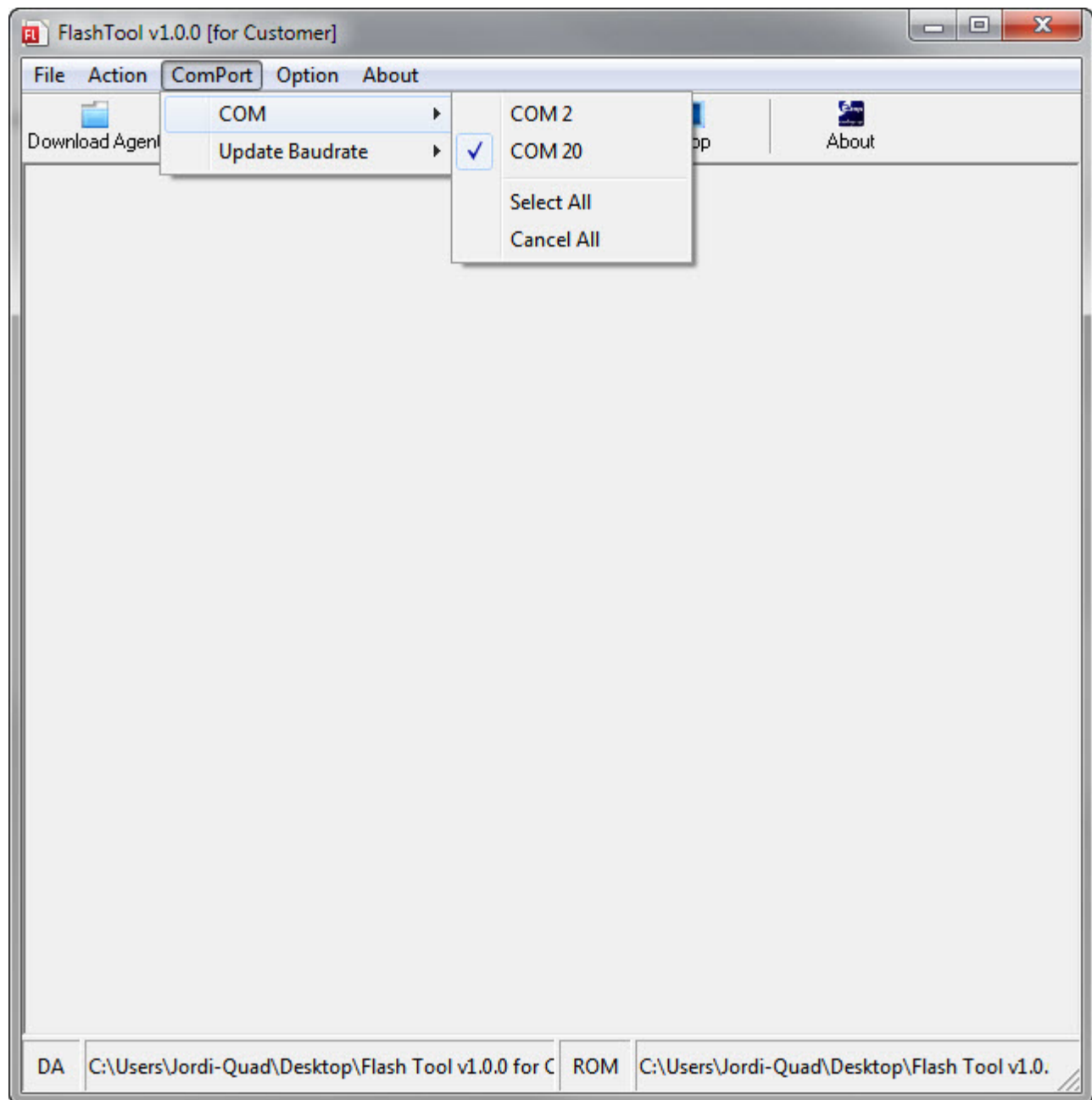
	Firmware	7/28/2010 10:50 AM	File folder	
	brom.dll	3/3/2008 7:17 PM	Application extens...	240 KB
	brom.ini	12/21/2006 8:48 PM	Configuration sett...	1 KB
	MTK_AllInOne_DA_MT3329_v4.02.bin	7/8/2008 11:07 PM	PentaLogix Jobfile...	14 KB
	PowerFlash.exe	12/1/2009 3:12 PM	Application	1,382 KB
	Powerflash.ini	8/4/2010 3:55 PM	Configuration sett...	2 KB
	scat.txt	5/9/2006 12:01 PM	Text Document	1 KB
	Test_Log_2010.7.7.csv	7/7/2010 9:48 AM	CSV File	1 KB
	Test_Log_2010.7.8.csv	7/8/2010 10:32 AM	CSV File	1 KB
	Test_Log_2010.7.28.csv	7/28/2010 10:54 AM	CSV File	1 KB
	Test_Log_2010.8.3.csv	8/3/2010 4:57 PM	CSV File	1 KB

Date created: 7/7/2010 9:41 AM  
Size: 1.34 MB

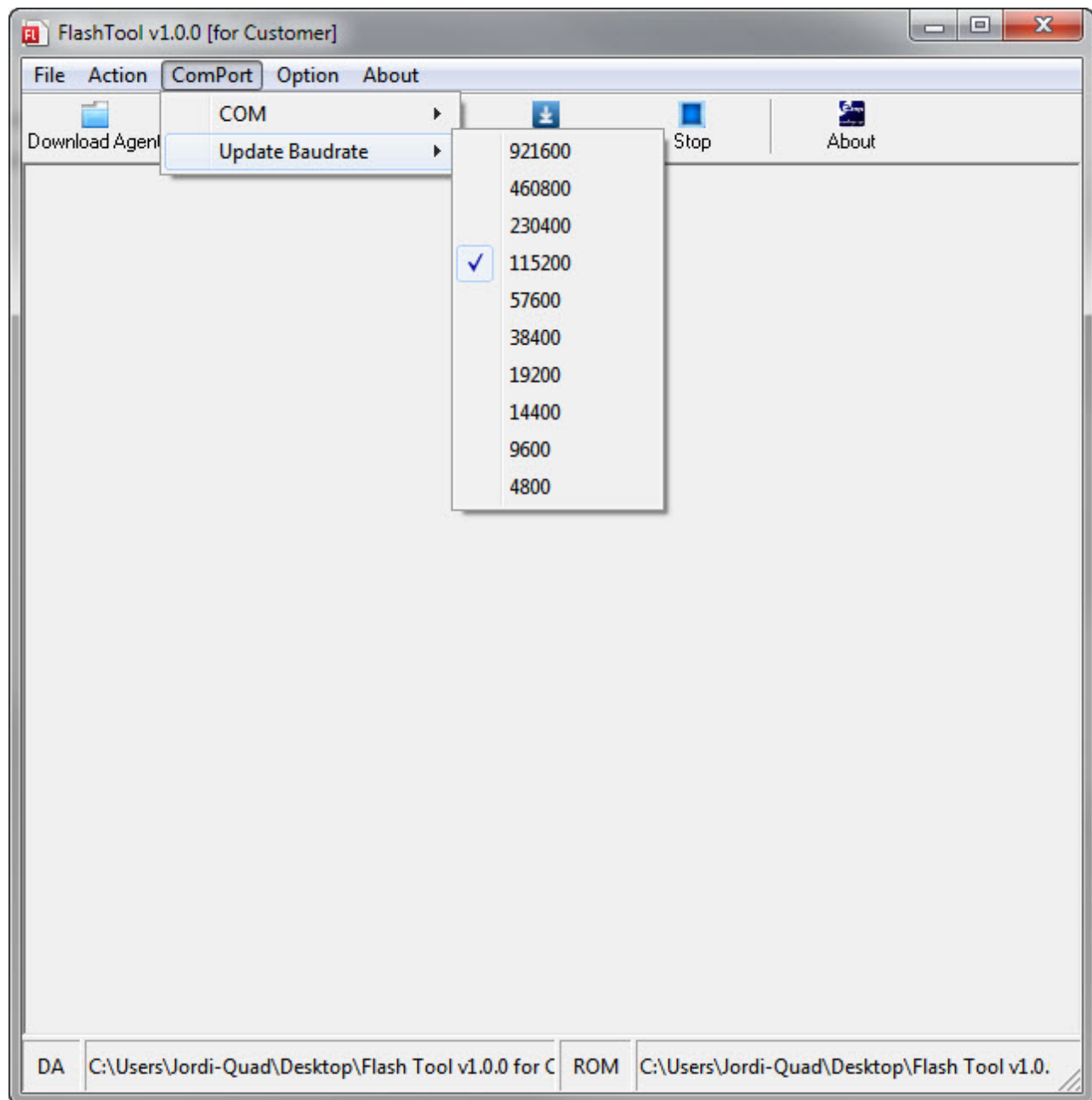
2.-Go to Options>>Series and select "3329".



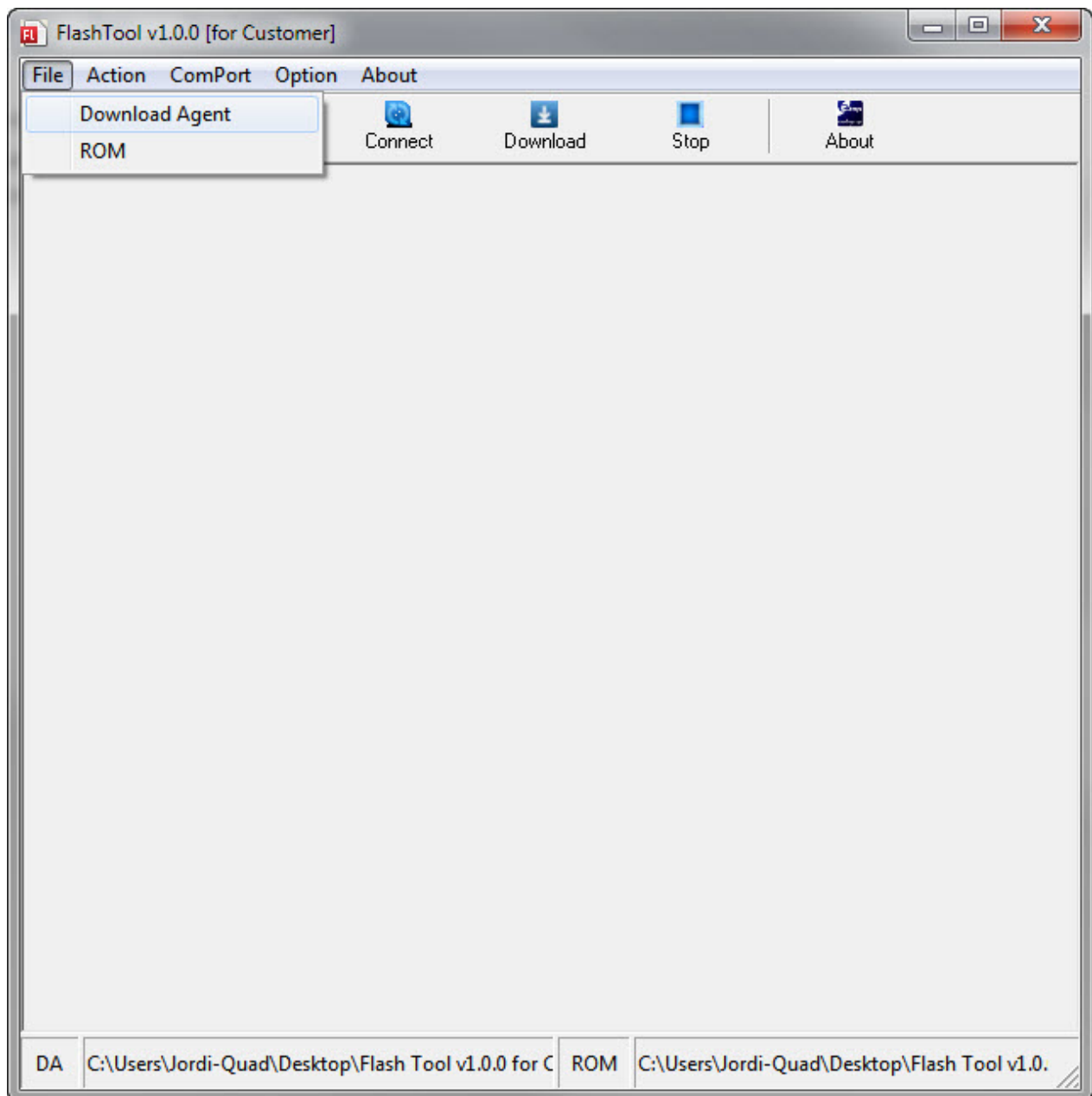
3.-Then go to “ComPort” and select the port connected to your GPS module.



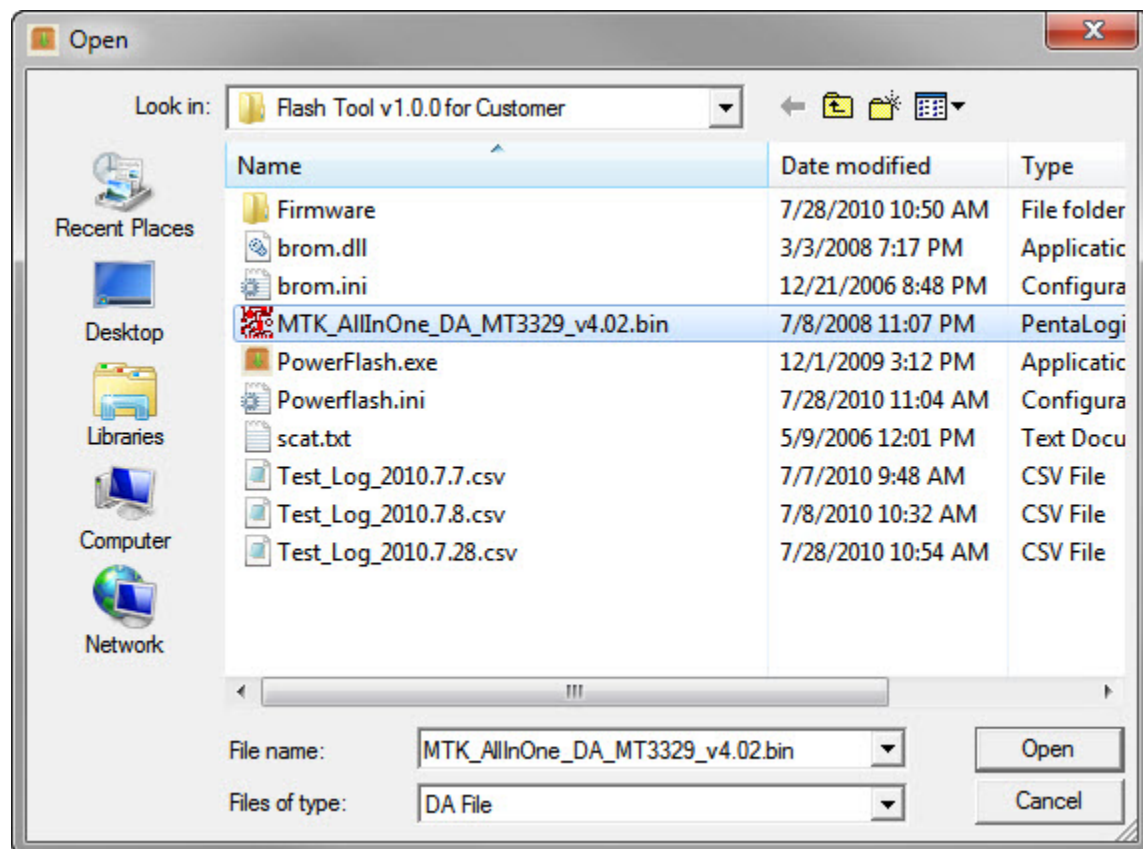
4.-Go to "ComPort" again and set the "Update Baudrate" to "115200".



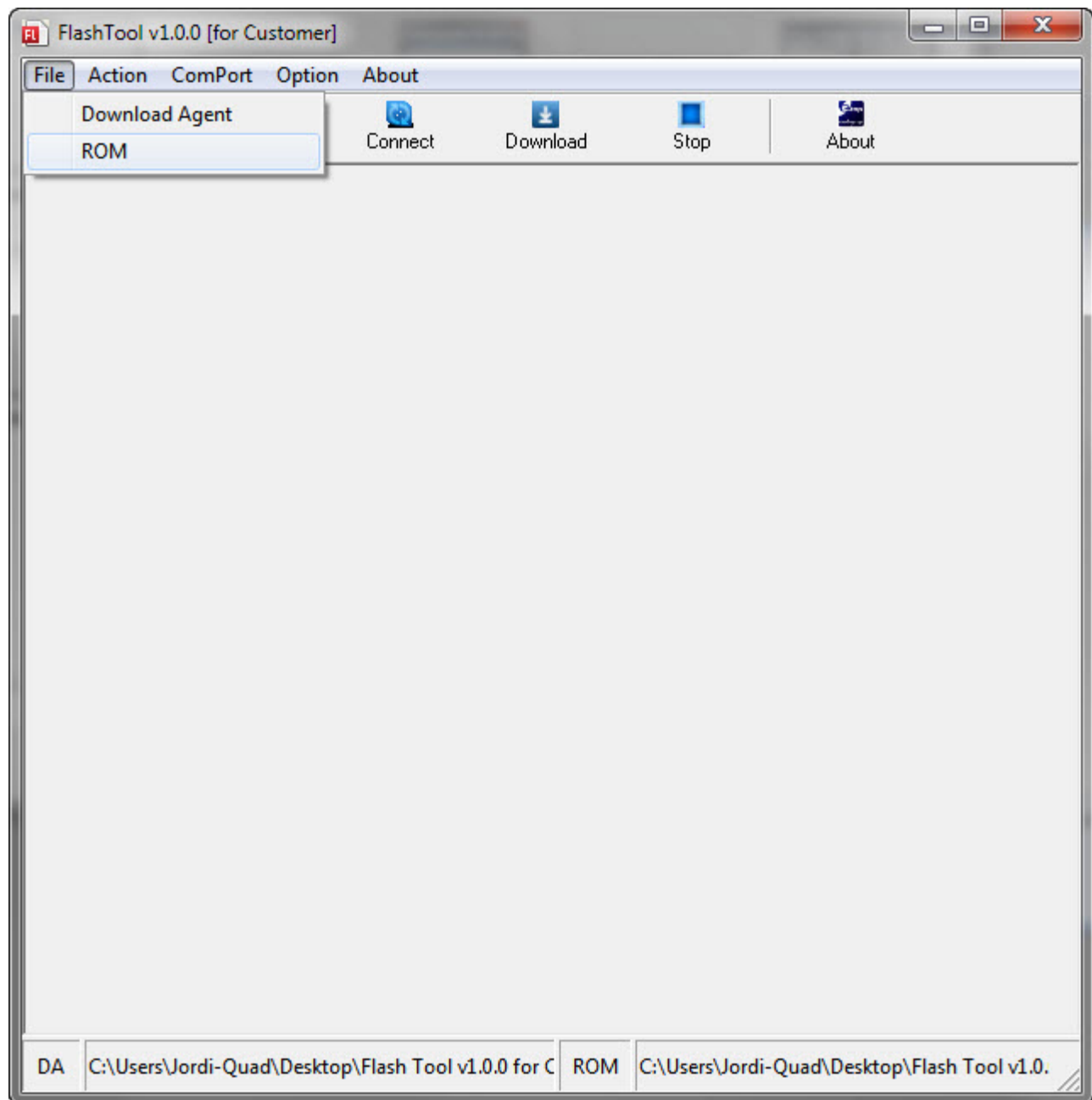
5.-Go to "File" and click on "Download Agent"



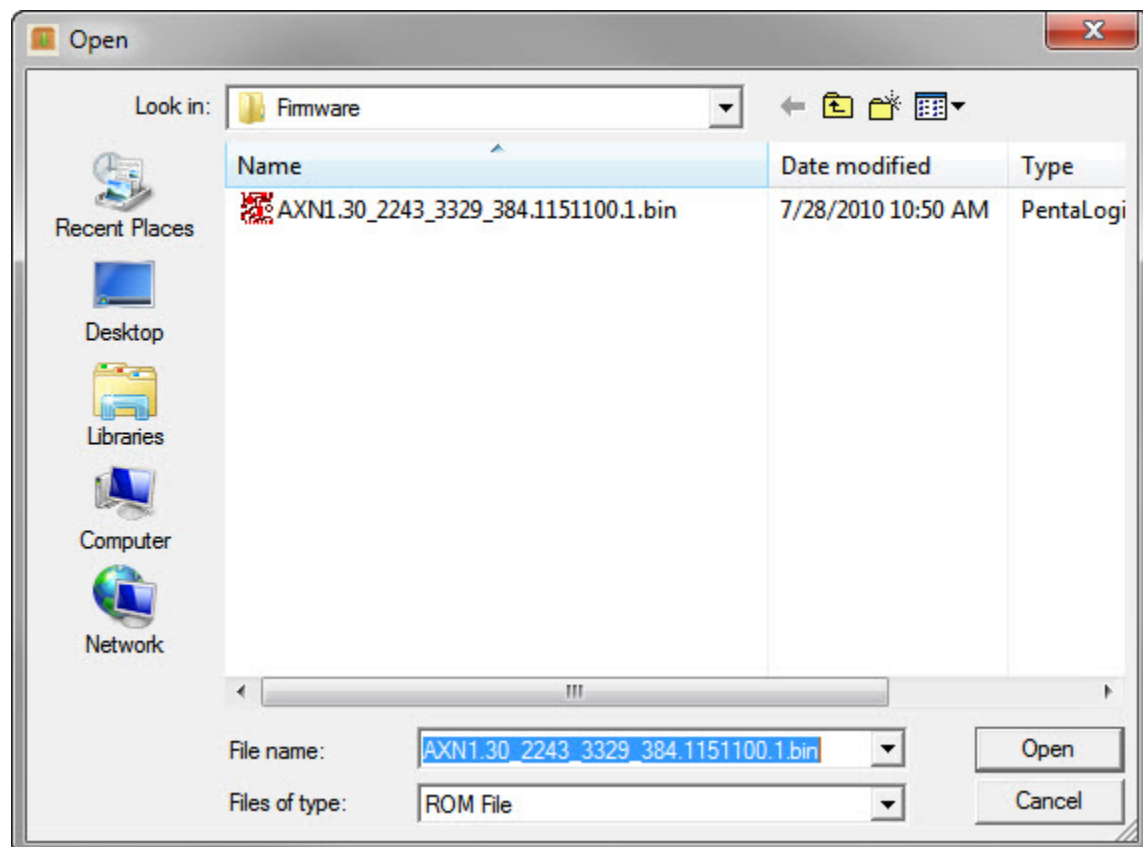
6.-Double click on "MTK\_AllInOne\_DA\_MT3329xxxx.bin".



7.-Now click on "ROM".

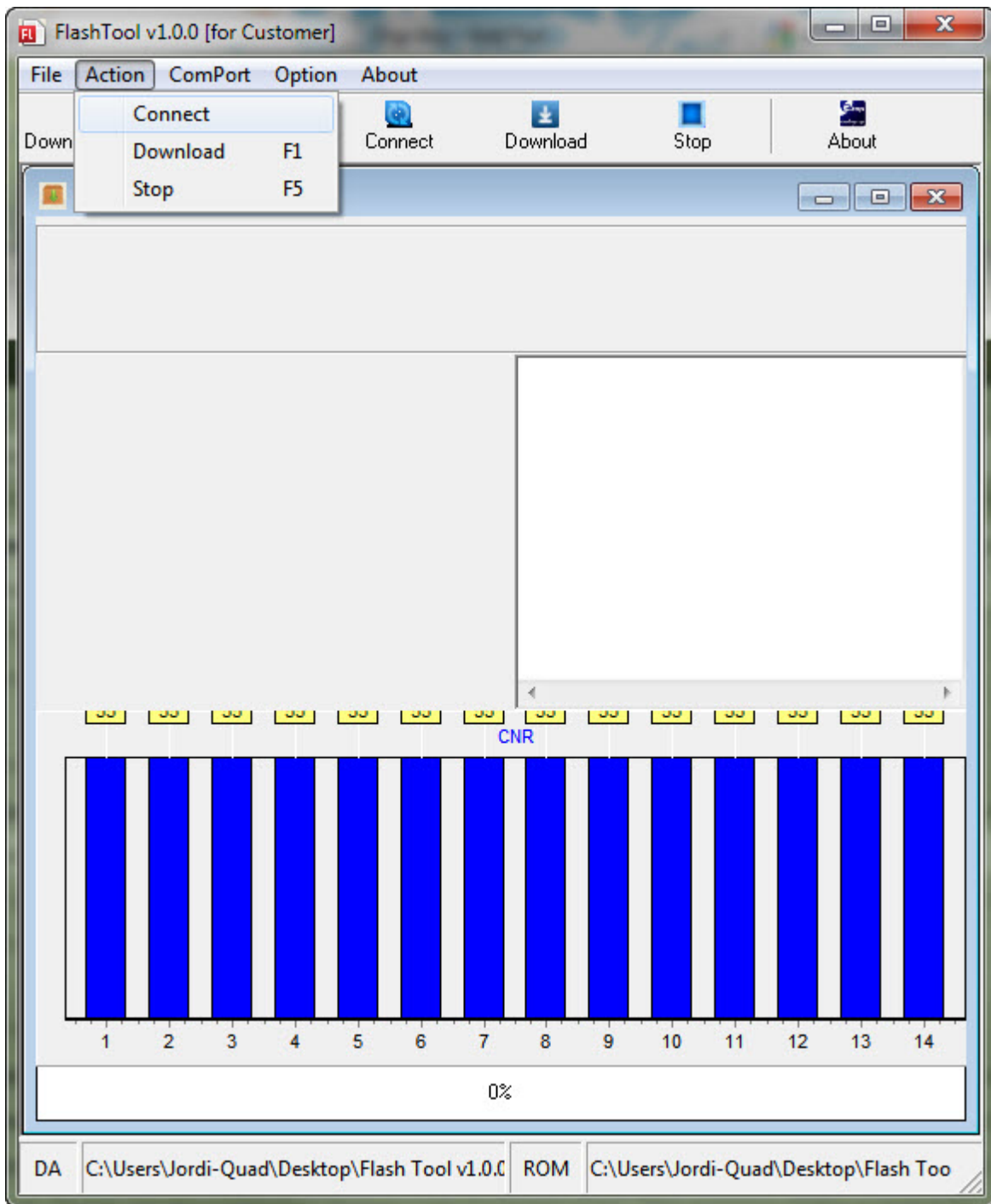


8.-Then go to folder “Firmware” and select the “firmware” you want to load, in this example there is only one file on the picture with the extension .bin:

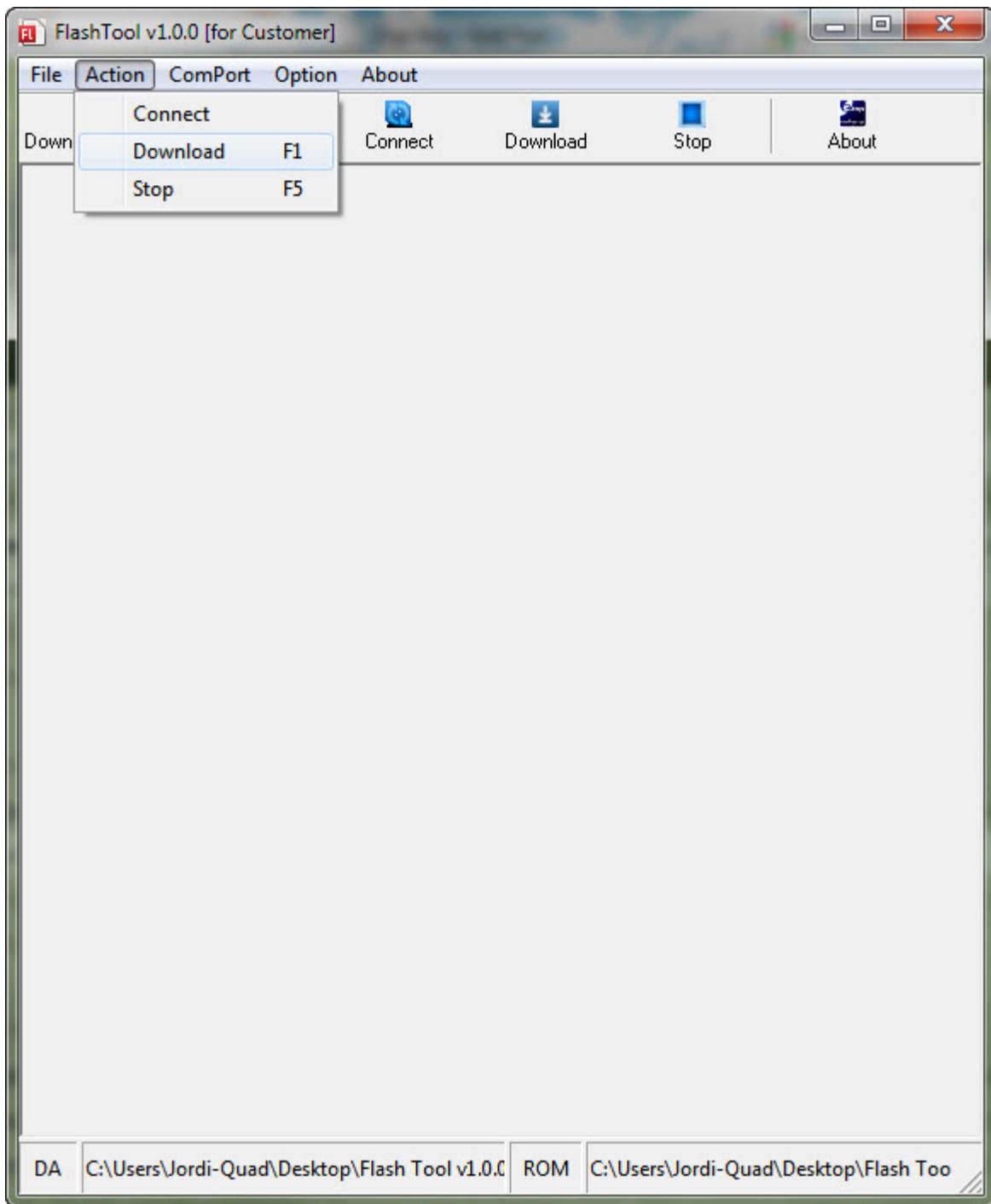


9.-Then go to “Actions” and click “Connect”, you should see the blue bars as indicated in the image:

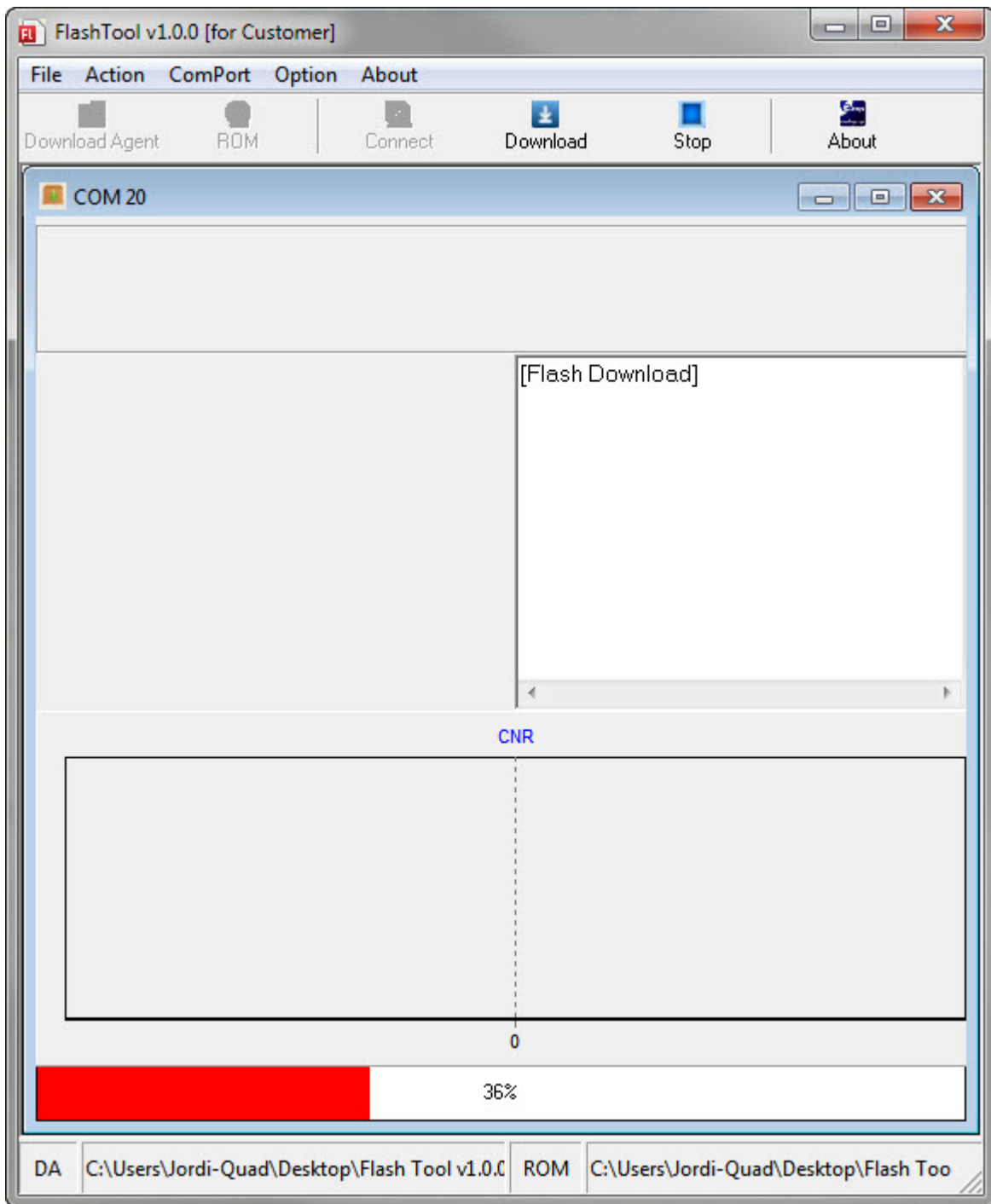




10.-Then go to “Action” and Click on “Download”



11.-Then the system will start loading the firmware:



12.-Finally you should see a green donut indicating that the load was successful. You GPS is not updated.

